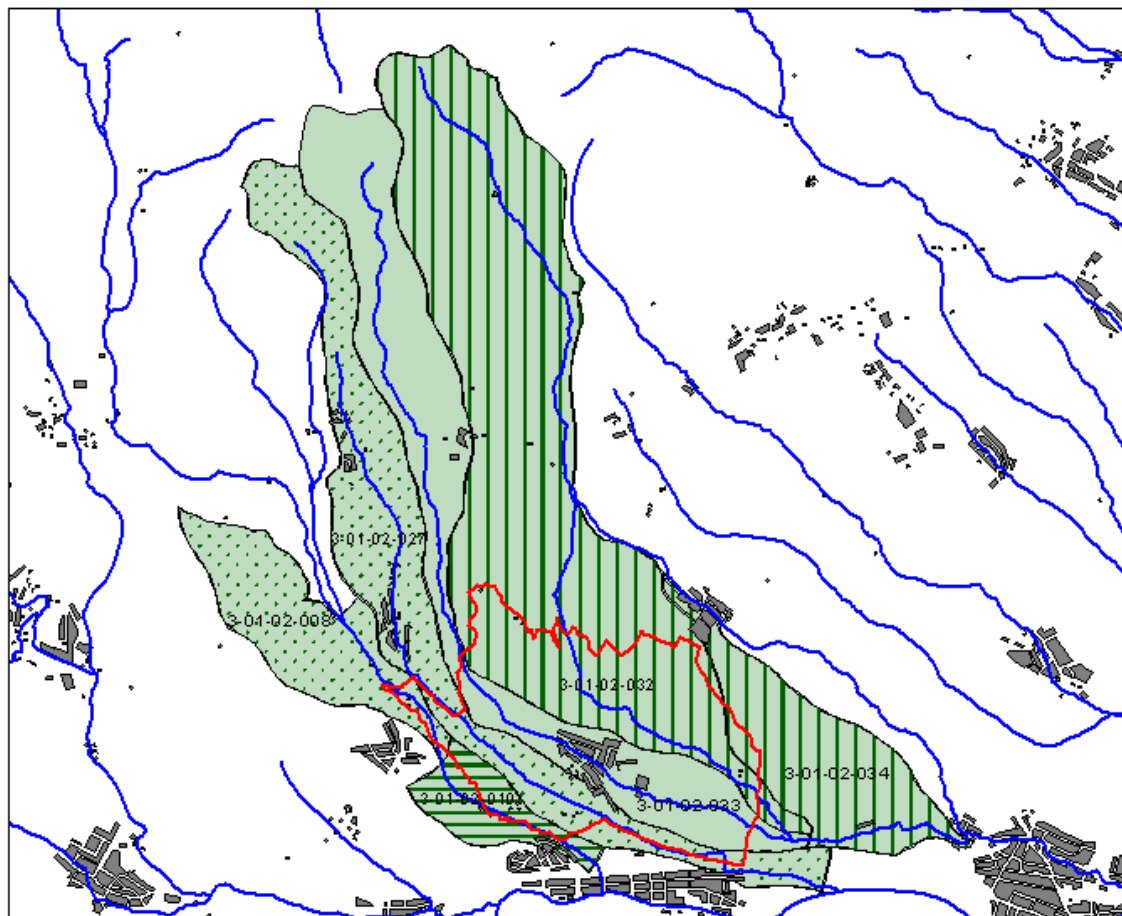
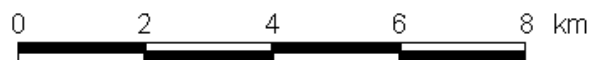









# Hydrologické celky podľa vodohospodárskej mapy pre k.ú. Batizovce



1 : 100 000



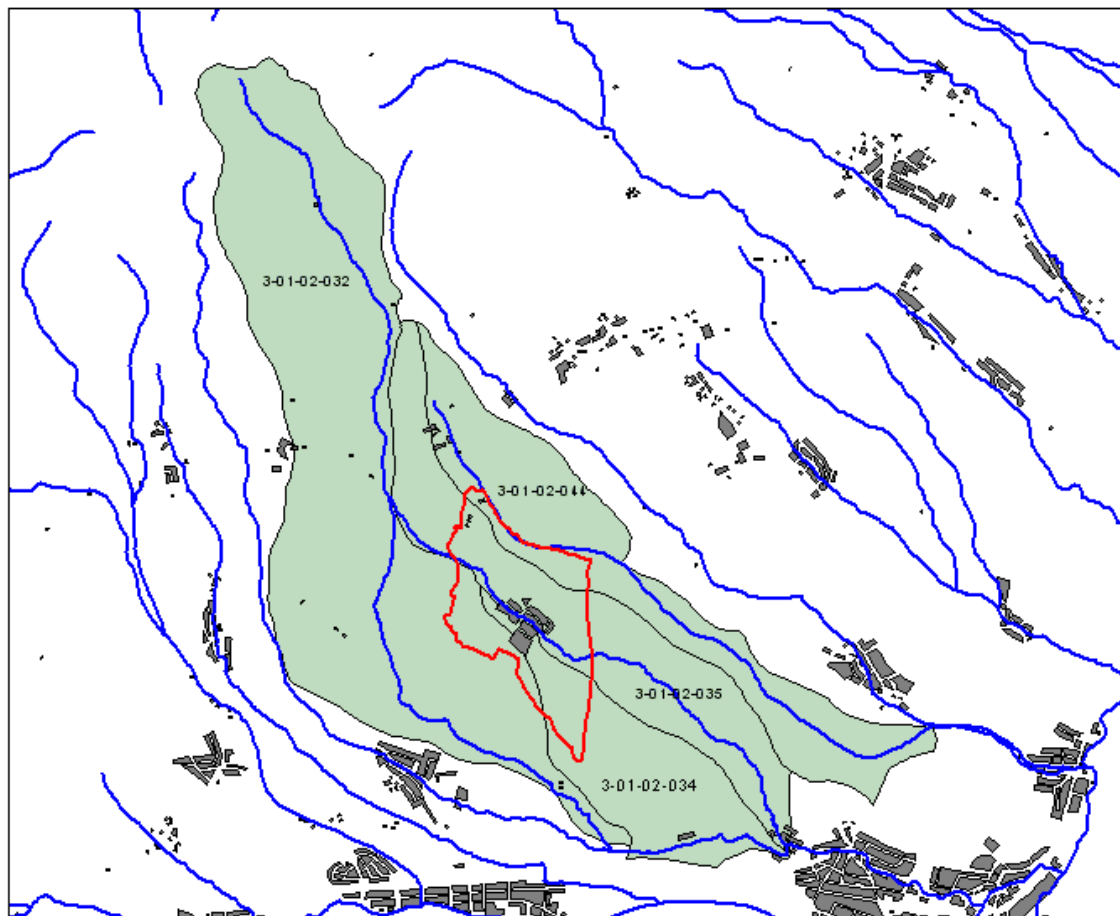
## Legenda:

-  hranica KÚ Batizovce
-  vodné toky
-  sídla
-  hydrologický celok KÚ Batizovce
-  mikropovodia prebraté z hydrologického celku KÚ Lučivná
-  mikropovodia prebraté z hydrologického celku KÚ Gerlachov
-  mikropovodia prebraté z hydrologického celku KÚ Štôla

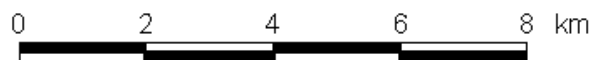


 spol. s r.o.





# Hydrologické celky podľa vodohospodárskej mapy pre k.ú. Gerlachov pod Tatrami



1 : 100 000

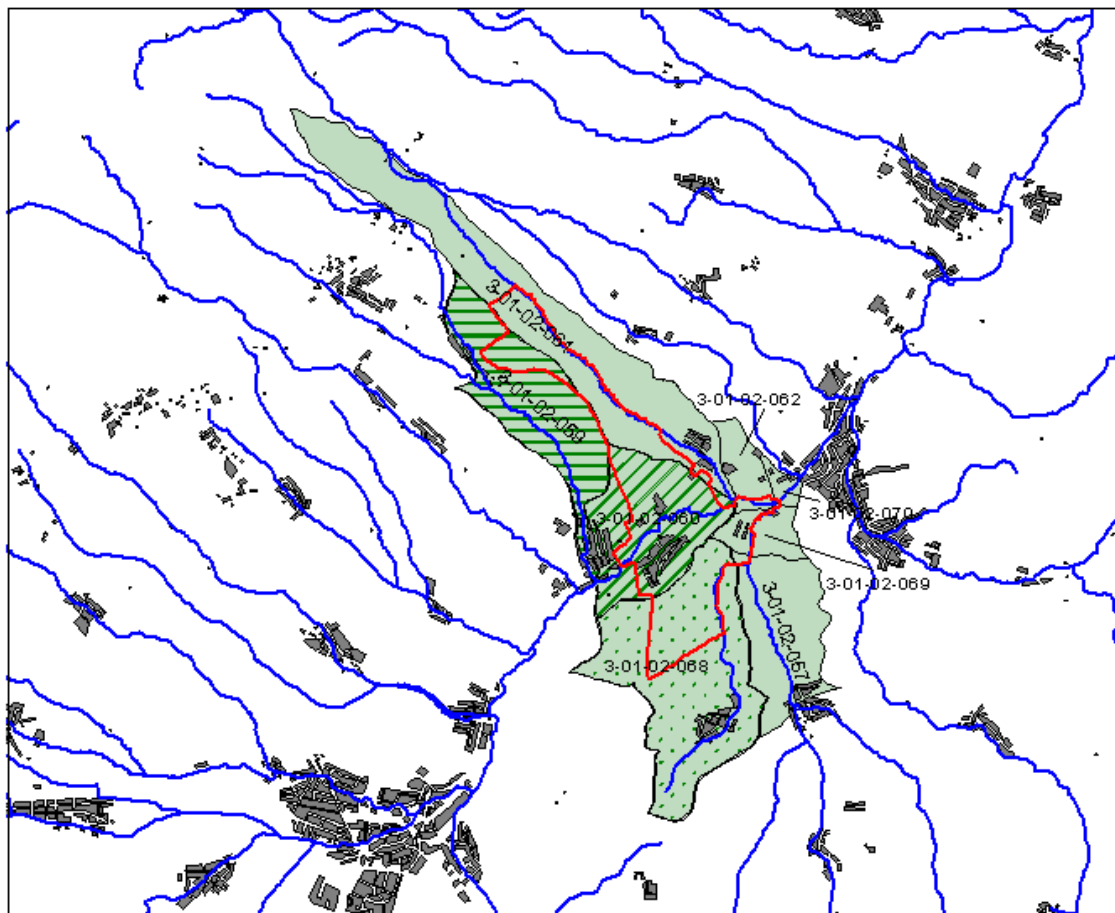


## Legenda:

-  hranica KÚ Gerlachov
-  vodné toky
-  sídla
-  hydrologický celok KÚ Gerlachov










# Hydrologické celky podľa vodohospodárskej mapy pre k.ú. Huncovce



1 : 150 000

0 2 4 6 8 km

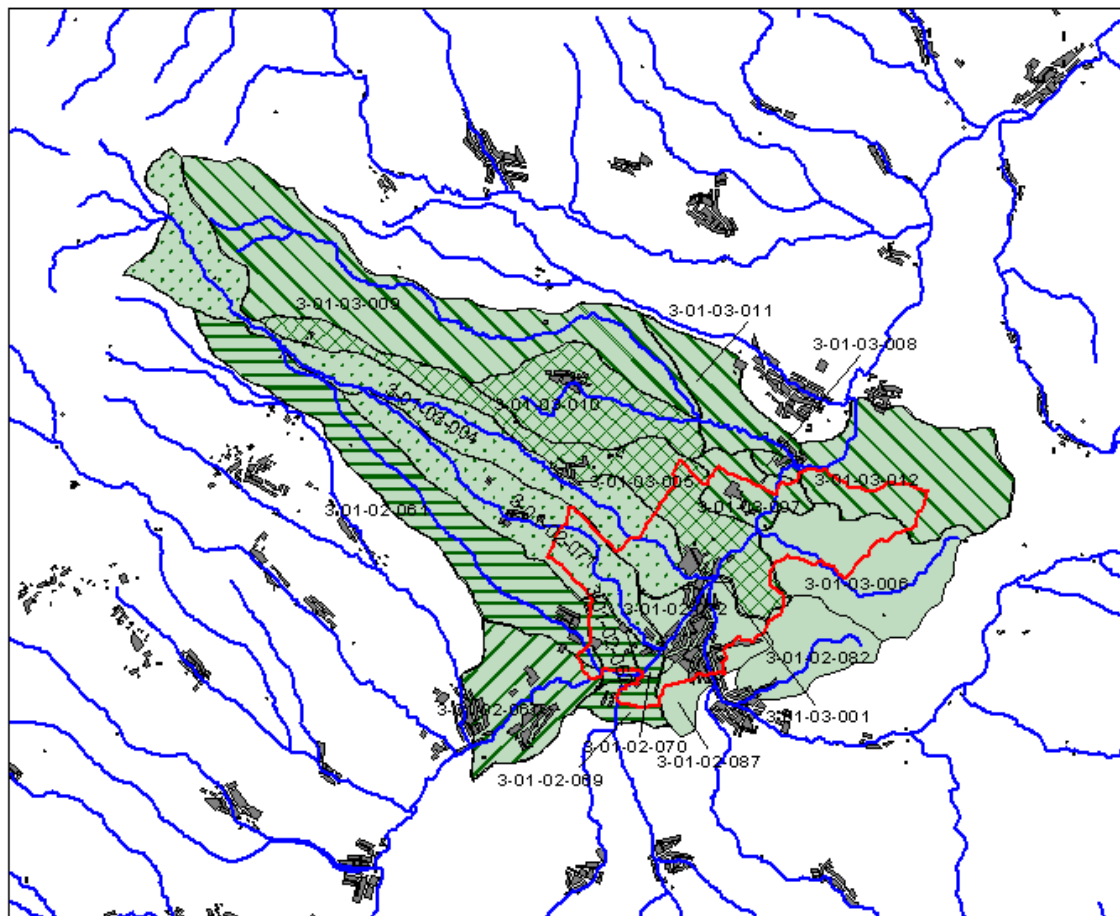
## Legenda:

-  hranica KÚ Huncovce
-  vodné toky
-  sídla
-  hydrologický celok KÚ Huncovce
-  mikropovodia prebraté z hydrologického celku KÚ Veľká Lomnica
-  mikropovodia prebraté z hydrologického celku KÚ Stará Lesná
-  mikropovodia prebraté z hydrologického celku KÚ Matejovce

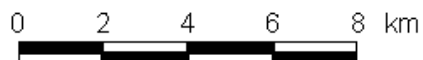


 spol. s r.o.




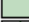





# Hydrologické celky podľa vodohospodárskej mapy pre k.ú. Kežmarok



1 : 150 000

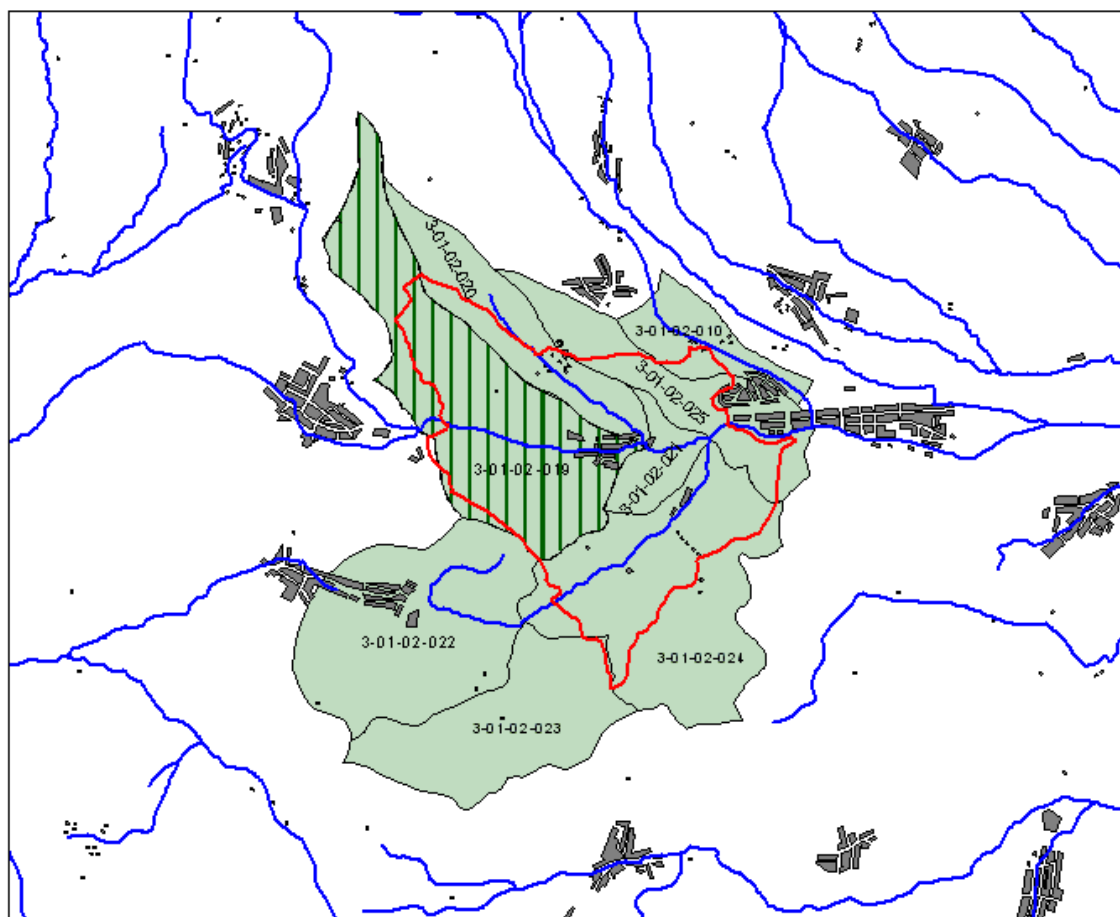


## Legenda:

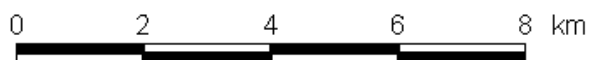
-  hranica KÚ Kežmarok
-  vodné toky
-  sídla
-  hydrologický celok KÚ Kežmarok
-  mikropovodia prebraté z hydrologického celku KÚ Mlynčeky
-  mikropovodia prebraté z hydrologického celku KÚ Malý Slavkov
-  mikropovodia prebraté z hydrologického celku KÚ Huncovce
-  mikropovodia prebraté z hydrologického celku KÚ Veľká Lomnica
-  mikropovodia prebraté z hydrologického celku KÚ Strážky








# Hydrologické celky podľa vodohospodárskej mapy pre k.ú. Lučivná



1 : 100 000

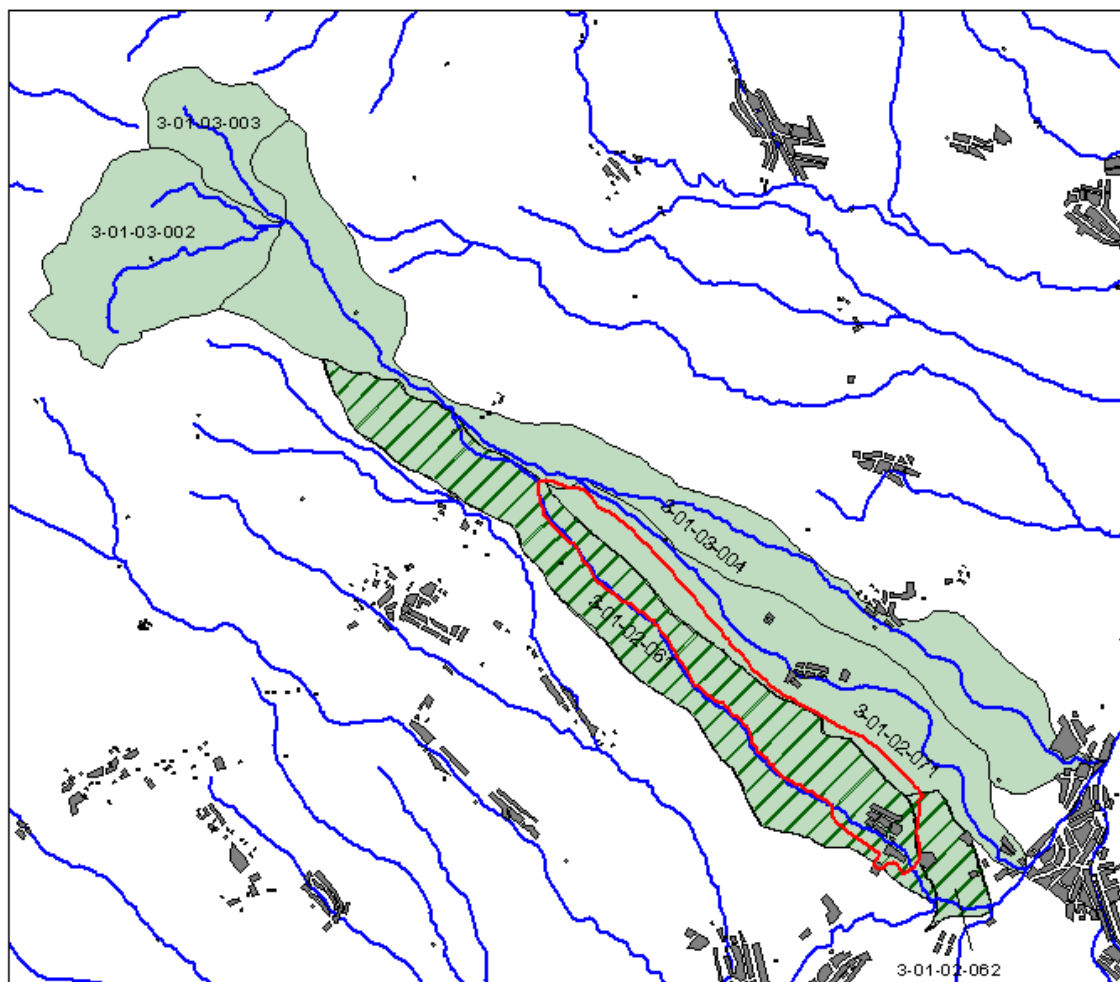


## Legenda:

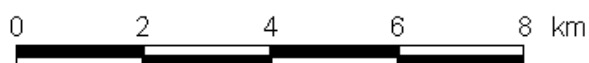
-  hranica KÚ Lučivná
-  vodné toky
-  sídla
-  hydrologický celok KÚ Lučivná
-  mikropovodie prebraté z hydrologického celku KÚ Štrba








# Hydrologické celky podľa vodohospodárskej mapy pre k.ú. Malý Slavkov



1 : 100 000

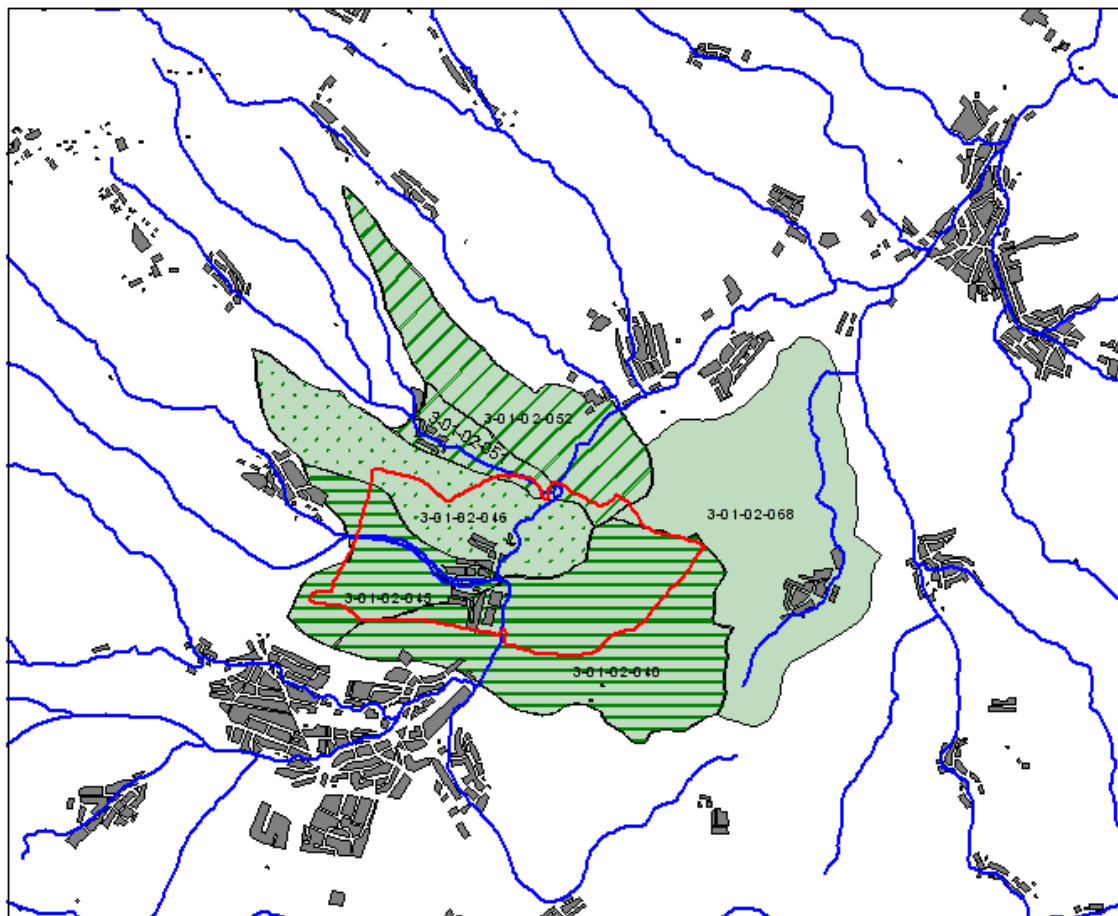


## Legenda:

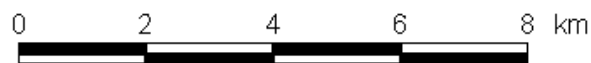
-  hranica KÚ Malý Slavkov
-  sídla
-  vodné toky
-  hydrologický celok KÚ Malý Slavkov
-  mikropovodie prebraté z hydrologického celku KÚ Huncovce










# Hydrologické celky podľa vodohospodárskej mapy pre k.ú. Matejovce



1 : 100 000



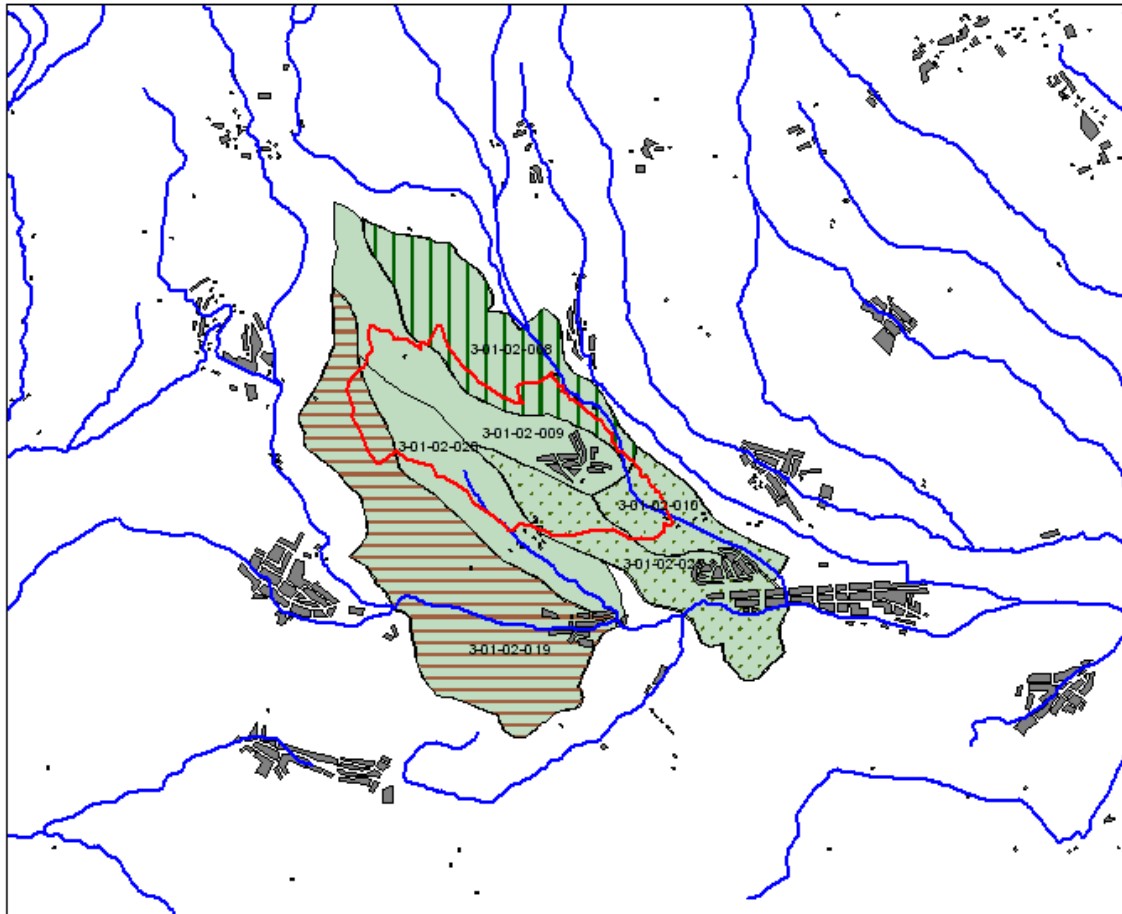
## Legenda:

-  hranica KÚ Matejovce
-  vodné toky
-  sídla
-  hydrologický celok Matejovce
-  mikropovodia prebraté z hydrologického celku KÚ Veľký Slavkov
-  mikropovodia prebraté z hydrologického celku KÚ Veľká
-  mikropovodia prebraté z hydrologického celku KÚ Mlynica

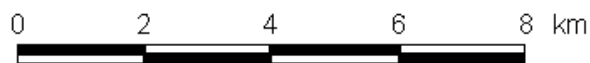











# Hydrologické celky podľa vodohospodárskej mapy pre k.ú. Mengusovce



1 : 100 000



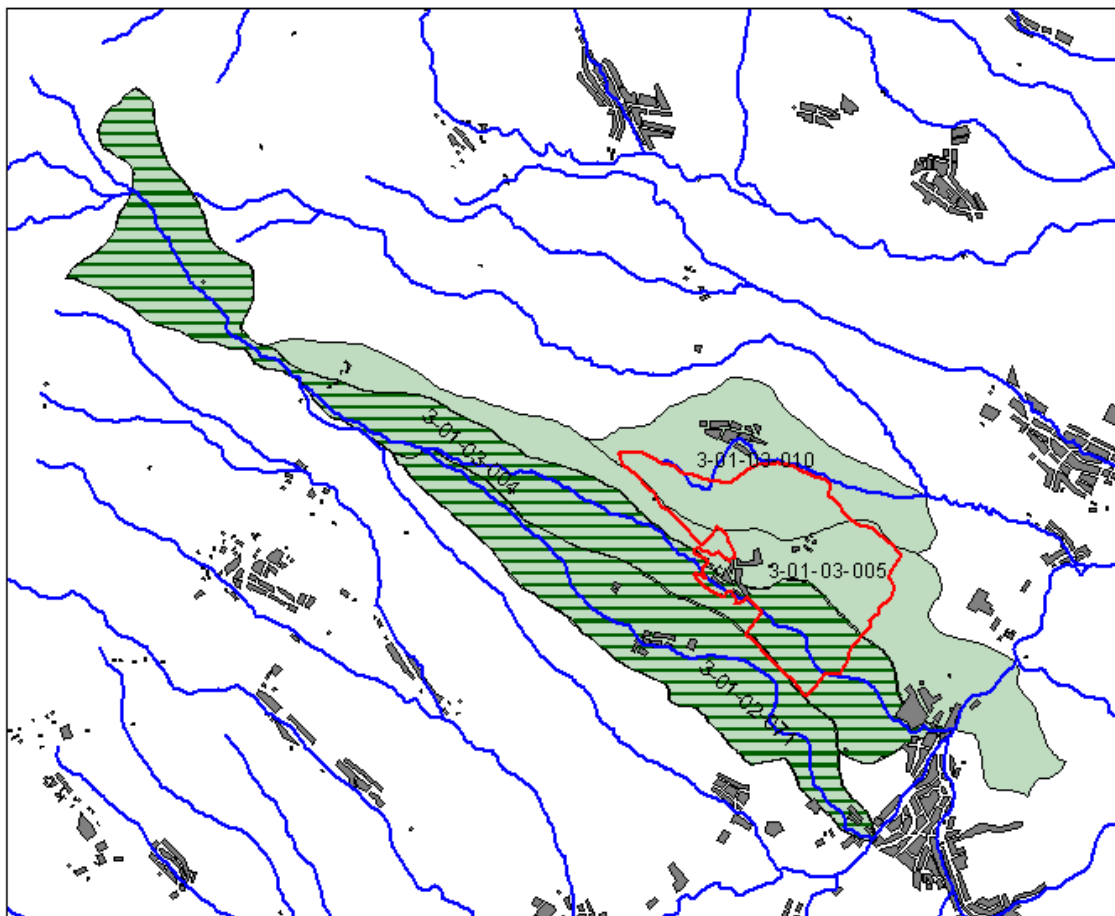
## Legenda:

-  hranica KÚ Mengusovce
-  vodné toky
-  sídla
-  hydrologický celok KÚ Mengusovce
-  mikropovodie prebraté z hydrologického celku KÚ Štrba
-  mikropovodie prebraté z hydrologického celku KÚ Štôla
-  mikropovodia prebraté z hydrologického celku KÚ Lučivná

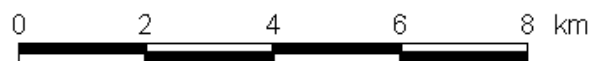









# Hydrologické celky podľa vodohospodárskej mapy pre k.ú. Mlynčeky



1 : 100 000

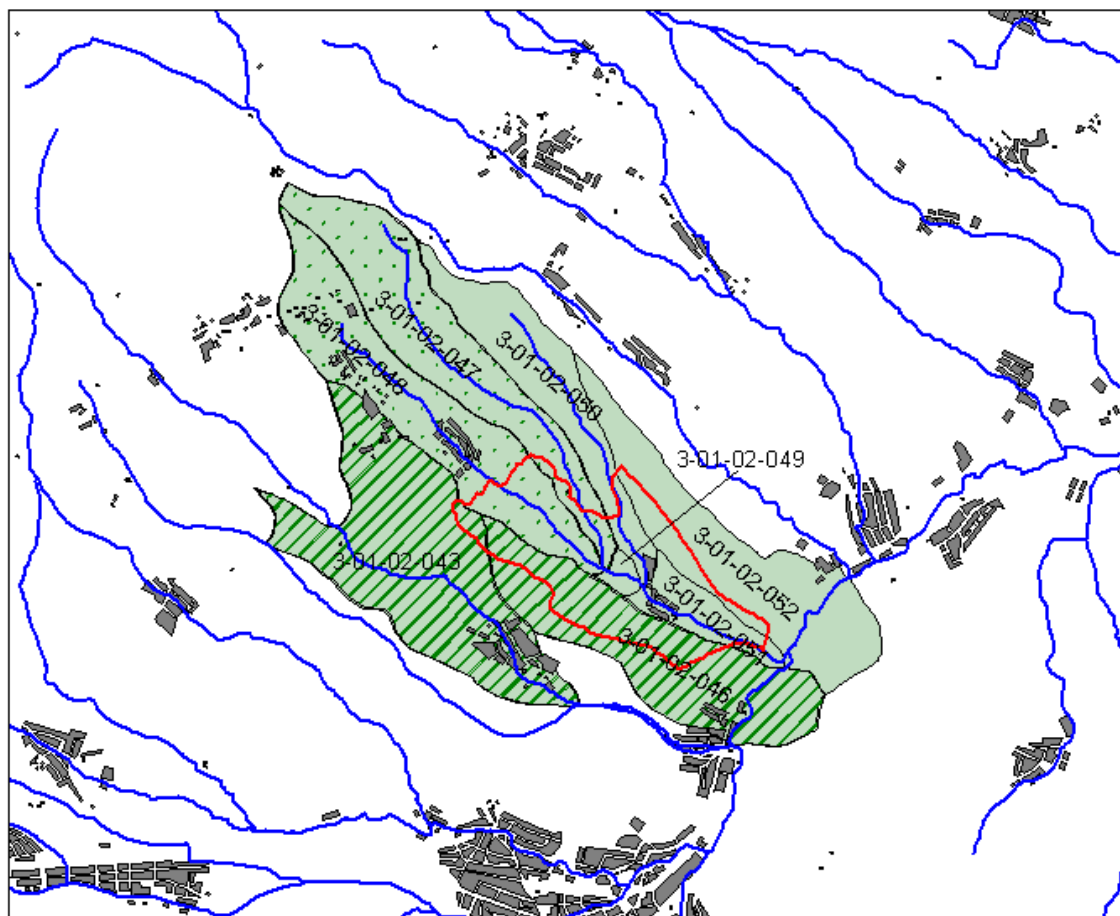


## Legenda:

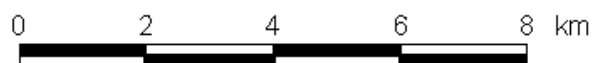
-  hranica KÚ Mlynčeky
-  vodné toky
-  sídla
-  hydrologický celok KÚ Mlynčeky
-  mikropovodie prebraté z hydrologického celku KÚ Malý Slavkov









# Hydrologické celky podľa vodohospodárskej mapy pre k.ú. Mlynica



1 : 100 000

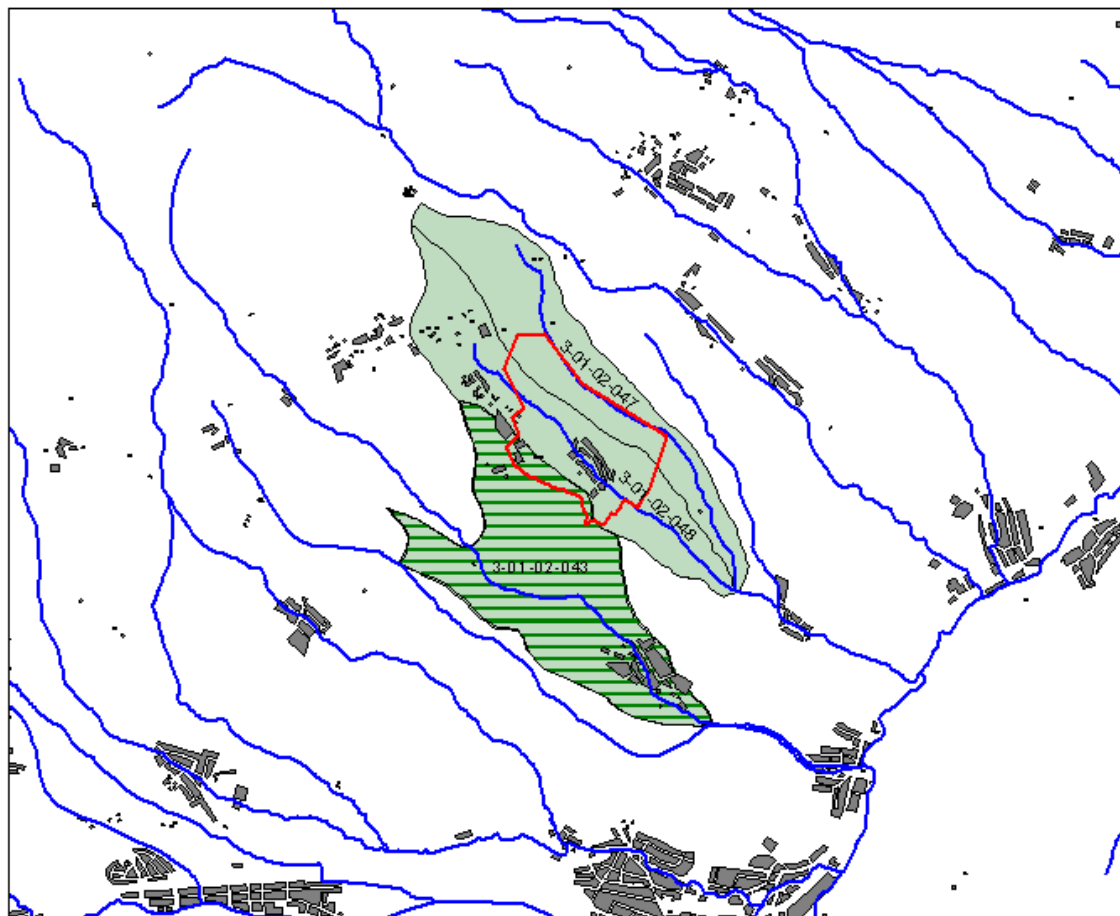


## Legenda:

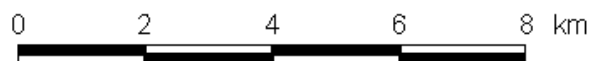
-  hranica KÚ Mlynica
-  vodné toky
-  sídla
-  hydrologický celok KÚ Mlynica
-  mikropovodia prebraté z hydrologického celku KÚ Nová Lesná
-  mikropovodia prebraté z hydrologického celku KÚ Veľký Slavkov








# Hydrologické celky podľa vodohospodárskej mapy pre k.ú. Nová Lesná



1 : 100 000

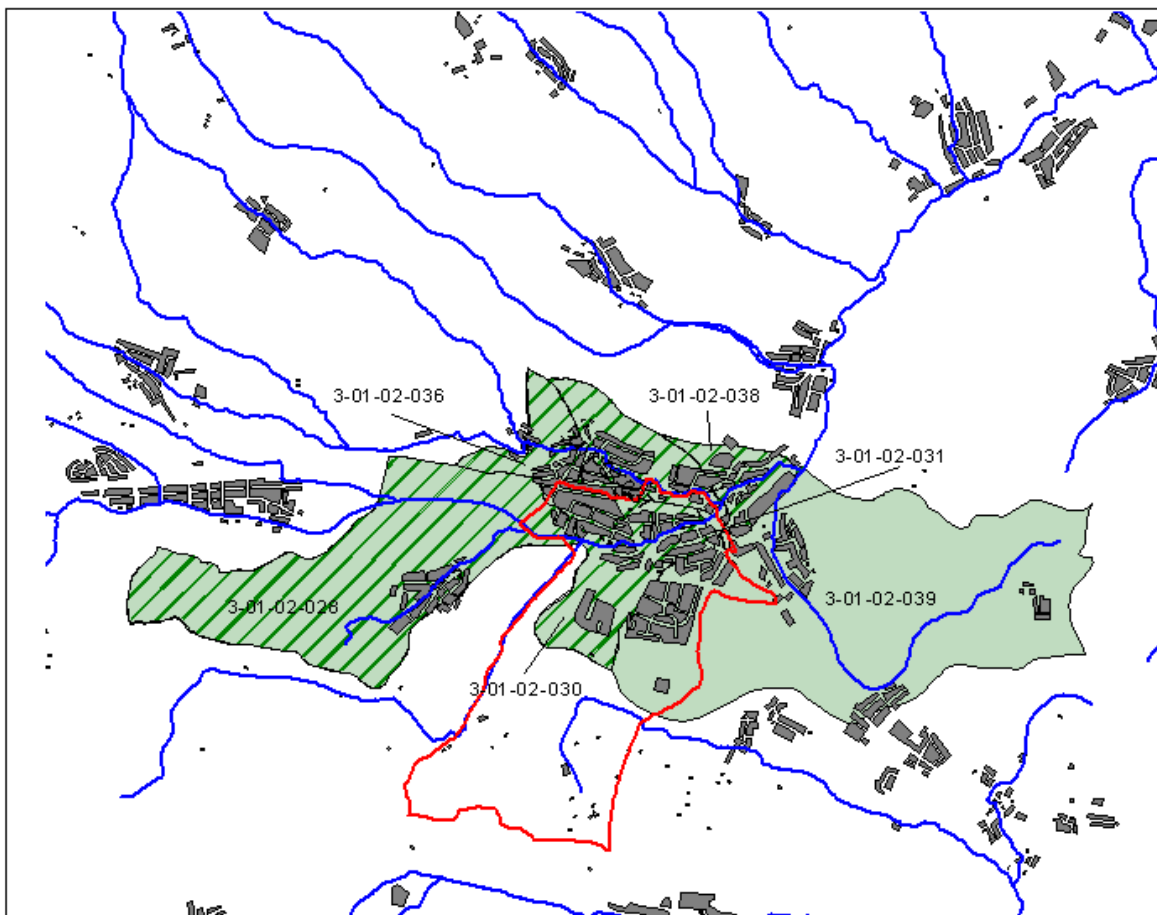


## Legenda:

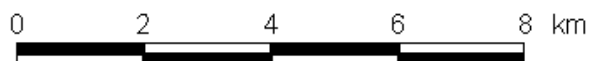
-  hranica KÚ Nová Lesná
-  vodné toky
-  sídla
-  hydrologický celok KÚ Nová Lesná
-  mikropovodia prebraté z hydrologického celku KÚ Veľký Slavkov








# Hydrologické celky podľa vodohospodárskej mapy pre k.ú. Poprad



1 : 100 000

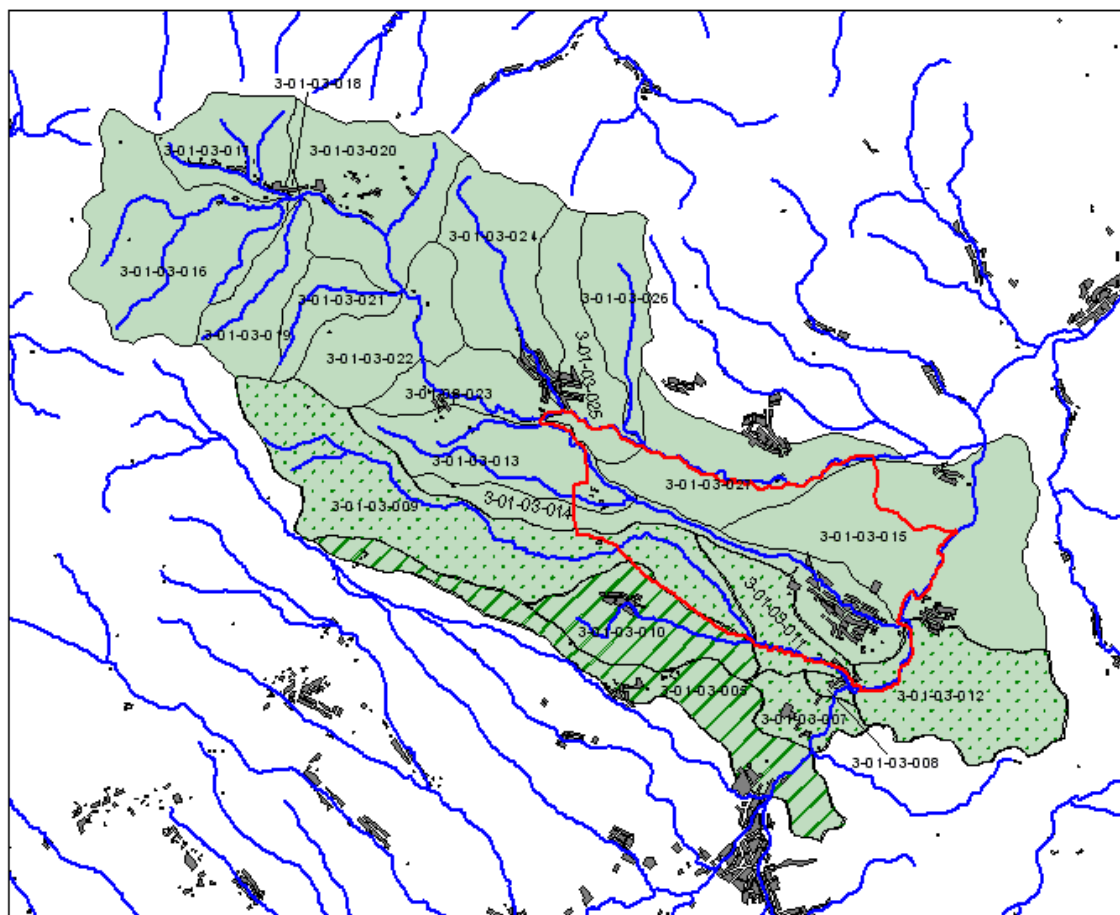


## Legenda:

-  hranica KÚ Poprad
-  vodné toky
-  sídla
-  hydrologický celok KÚ Poprad
-  mikropovodia prebraté z hydrologického celku KÚ Veľká



# Hydrologické celky podľa vodohospodárskej mapy pre k.ú.Spišská Belá









1 : 150 000

0 2 4 6 8 km



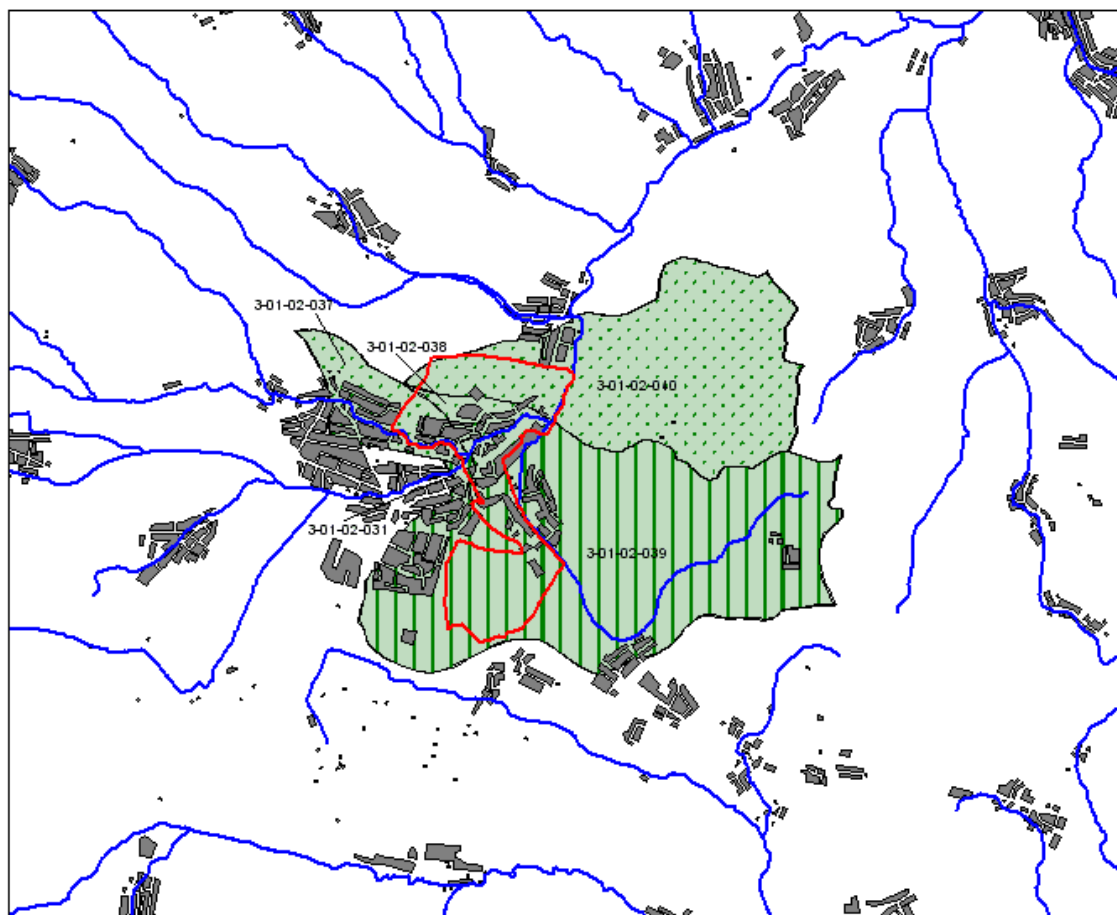
## Legenda:

-  hranica KÚ Spišská Belá
-  vodné toky
-  sídla
-  hydrologický celok KÚ Spišská Belá
-  mikropovodia prebraté z hydrologického celku KÚ Mlynčeky
-  mikropovodia prebraté z hydrologického celku KÚ Strážky

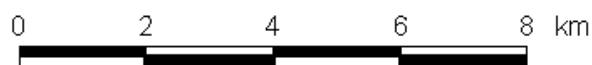


 spol. s r.o.







# Hydrologické celky podľa vodohospodárskej mapy pre k.ú. Spišská Sobota



1 : 100 000

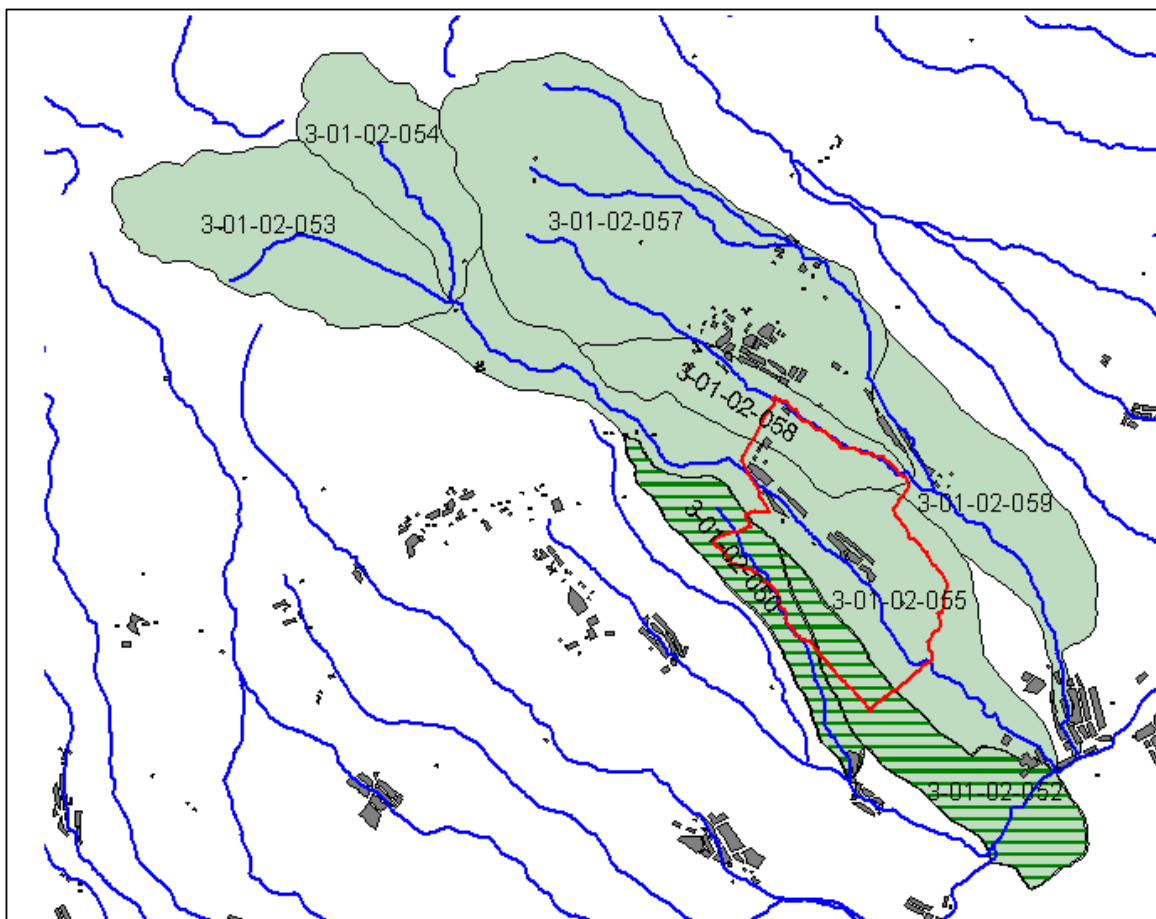


## Legenda:

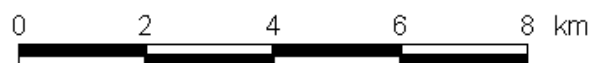
-  hranica KÚ Spišská Sobota
-  vodné toky
-  sídla
-  hydrologický celok Spišská Sobota
-  mikropovodia prebraté z hydrologického celku KÚ Poprad
-  mikropovodia prebraté z hydrologického celku KÚ Veľká








# Hydrologické celky podľa vodohospodárskej mapy pre k.ú. Stará Lesná



1 : 100 000



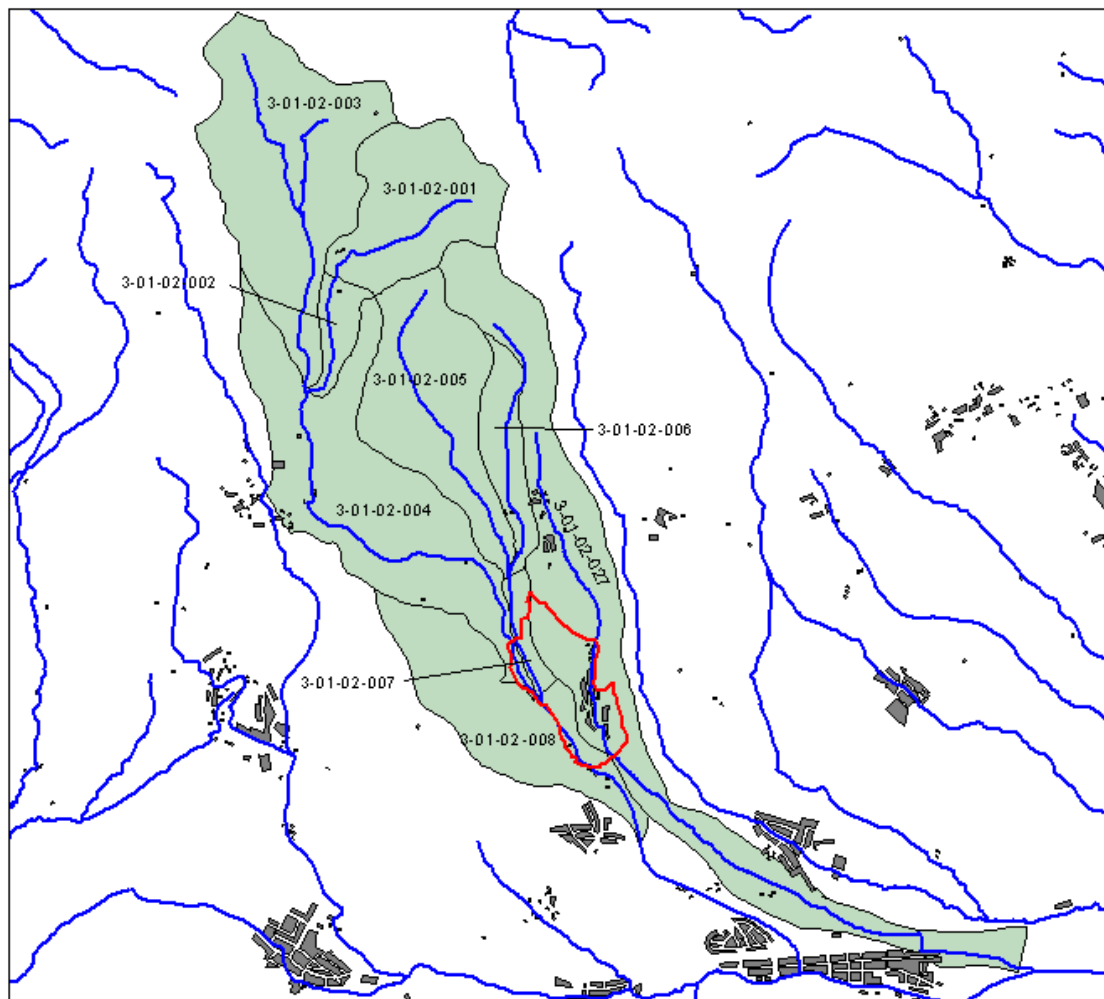
## Legenda:

-  hranica KÚ Stará Lesná
-  vodné toky
-  sídla
-  hydrologický celok Stará Lesná
-  mikropovodia prebraté z hydrologického celku KÚ Mlynica

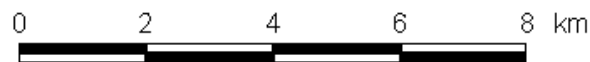








# Hydrologické celky podľa vodohospodárskej mapy pre k.ú. Štôla



1 : 100 000

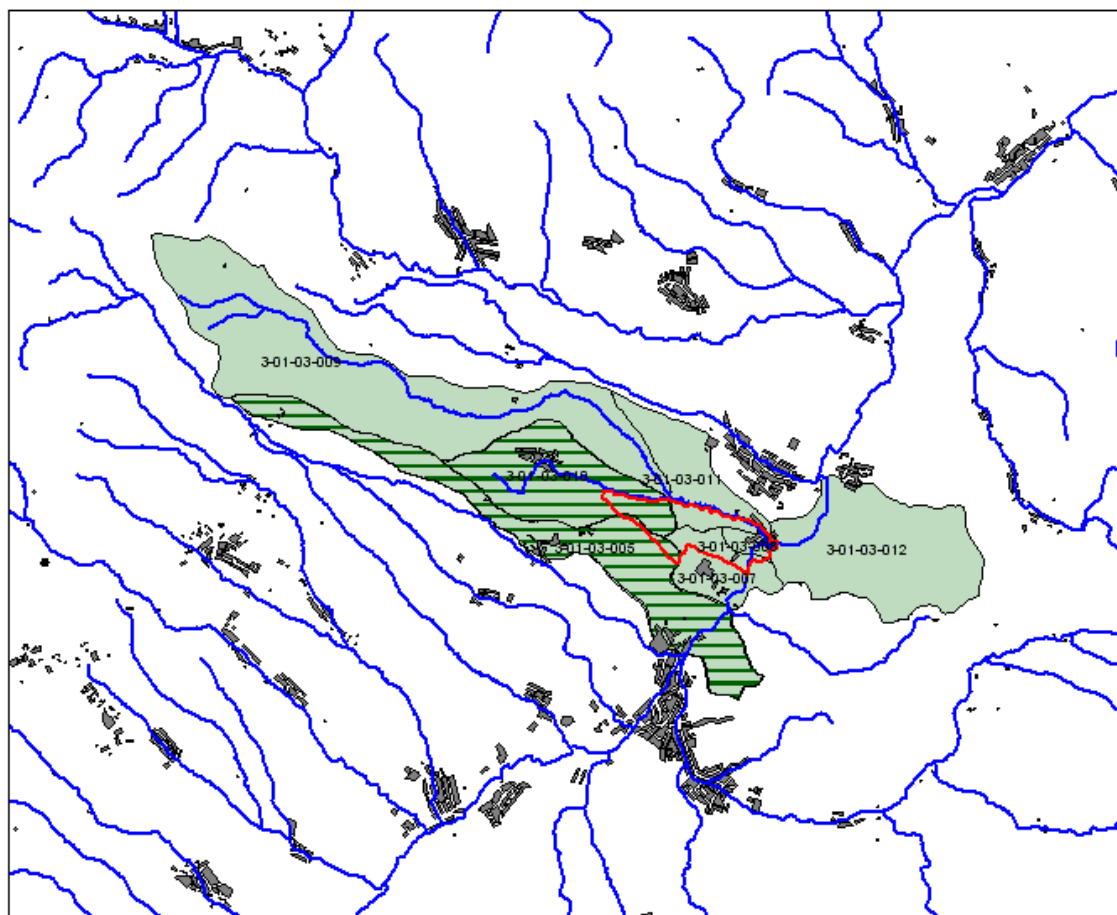


## Legenda:

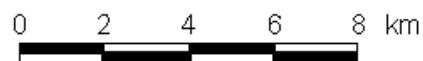
-  hranica KÚ Štôla
-  vodné toky
-  sídla
-  hydrologický celok KÚ Štôla








# Hydrologické celky podľa vodohospodárskej mapy pre k.ú. Strážky



1 : 150 000

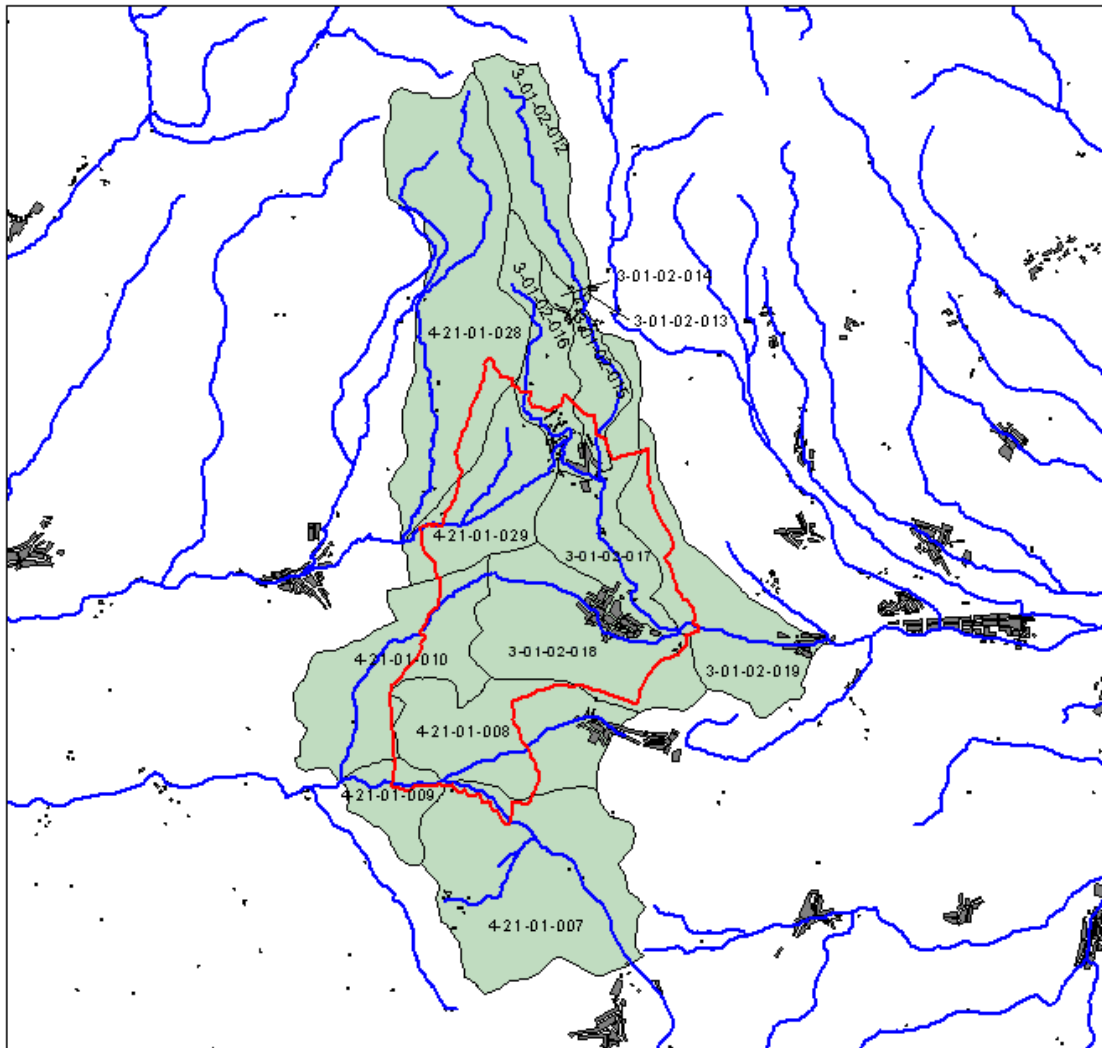


## Legenda:

-  hranica KÚ Strážky
-  vodné toky
-  sídla
-  hydrologický celok KÚ Strážky
-  mikropovodia prebraté z hydrologického celku KÚ Mlynčeky







# Hydrologické celky podľa vodohospodárskej mapy pre k.ú. Štrba



1 : 150 000

0 2 4 6 8 km

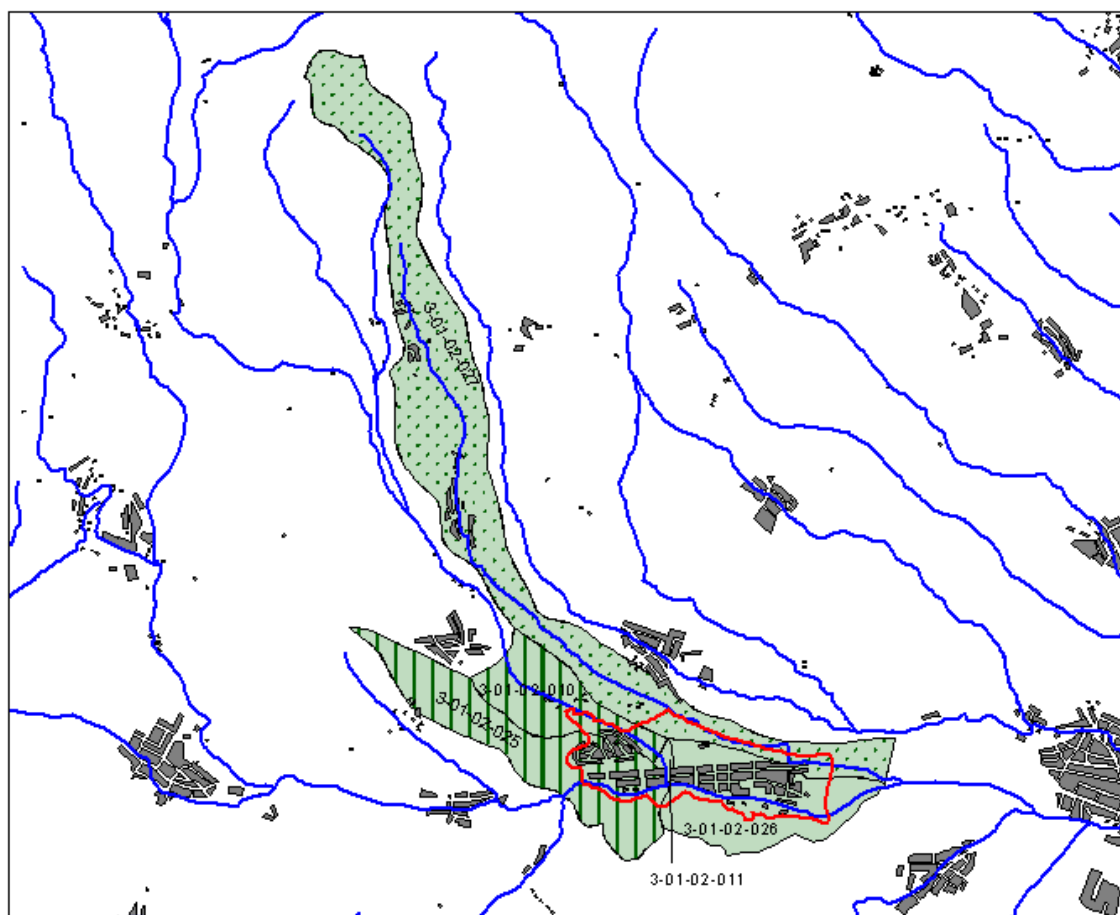
## Legenda:

-  hranica KÚ Štrba
-  vodné toky
-  sídla
-  hydrologický celok KÚ Štrba

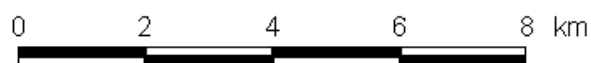


 spol. s r.o.







# Hydrologické celky podľa vodohospodárskej mapy pre k.ú. Svit



1 : 100 000

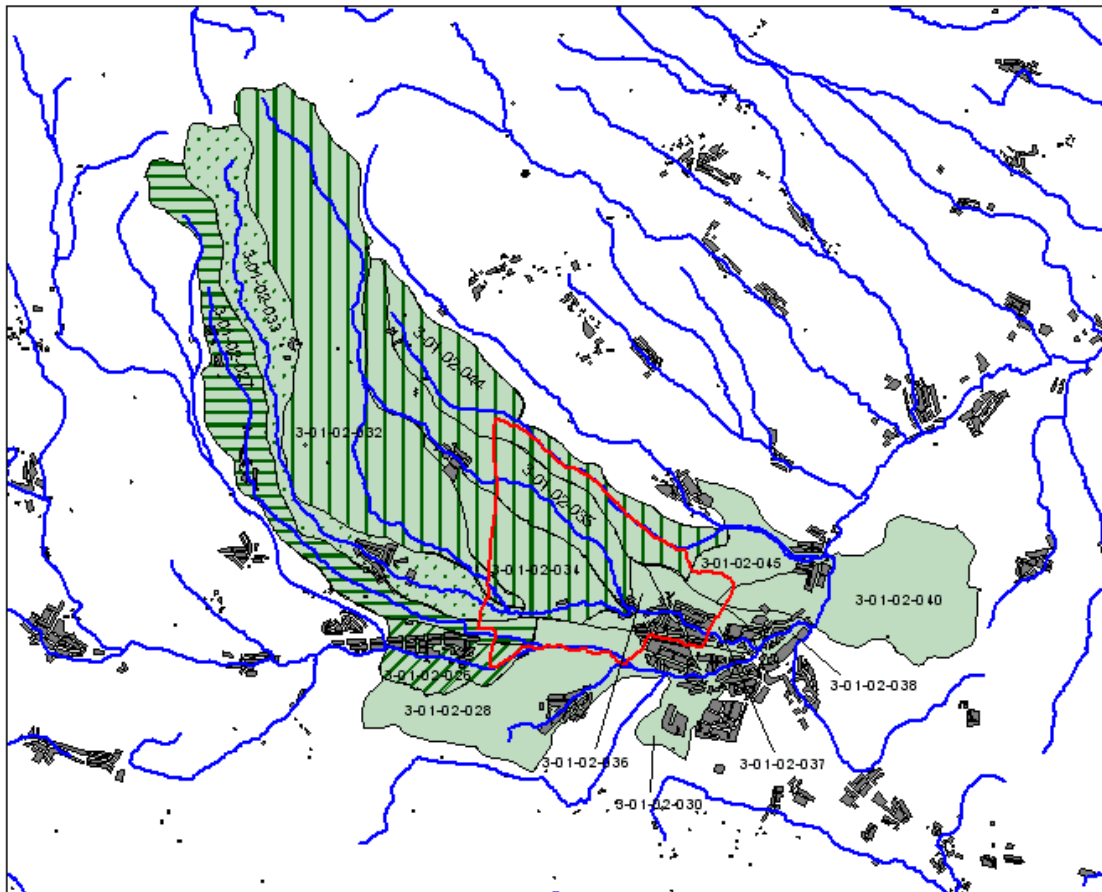


## Legenda:

-  hranica KÚ Svit
-  vodné toky
-  sídla
-  hydrologický celok KÚ Svit
-  mikropovodia prebraté z hydrologického celku KÚ Lučivná
-  mikropovodie prebraté z hydrologického celku KÚ Štôla











# Hydrologické celky podľa vodohospodárskej mapy pre k.ú. Veľká



1 : 150 000

0 2 4 6 8 km

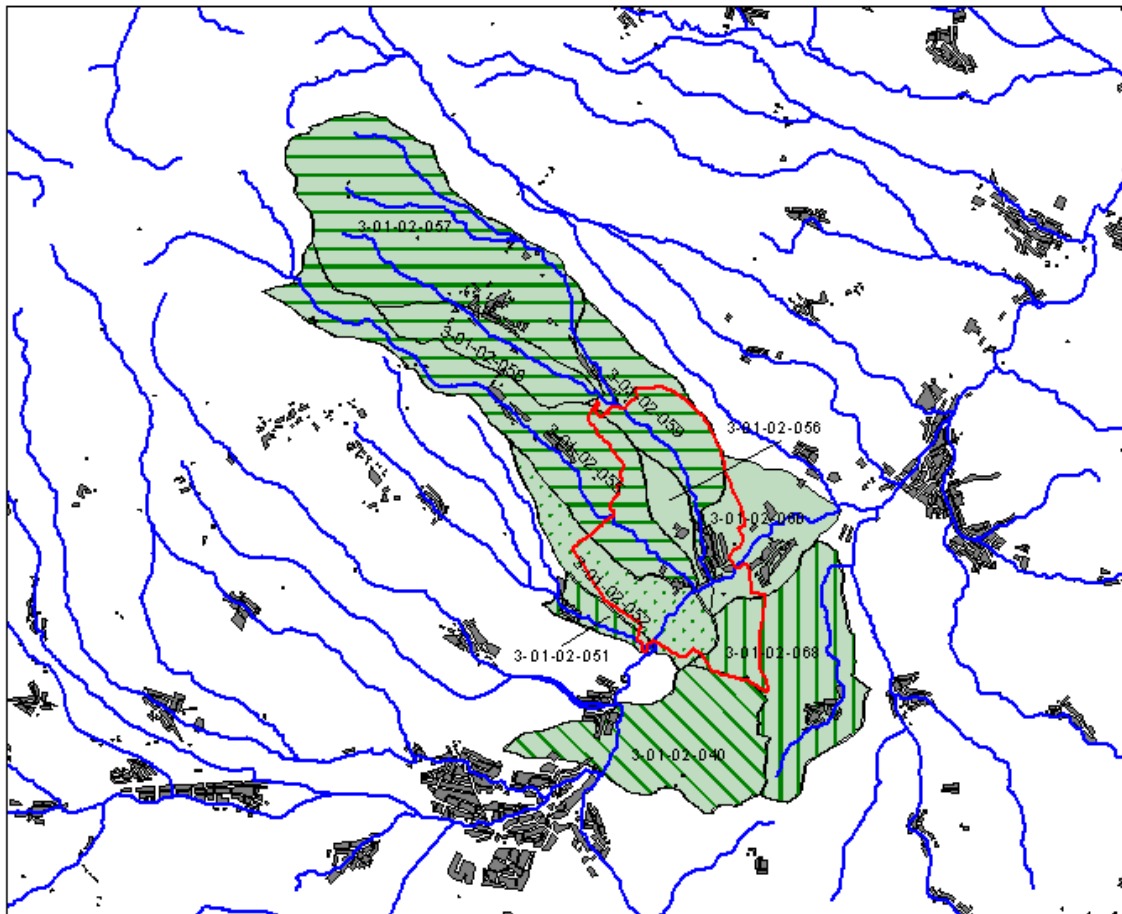
## Legenda:

-  hranica KÚ Veľká
-  vodné toky
-  sídla
-  hydrologický celok KÚ Veľká
-  mikropovodie prebraté z hydrologického celku KÚ Štôla
-  mikropovodie prebraté z hydrologického celku KÚ Svit
-  mikropovodia prebraté z hydrologického celku KÚ Gerlachov
-  mikropovodie prebraté z hydrologického celku KÚ Batizovce

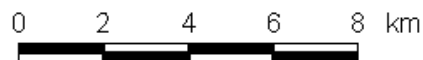


 spol. s r.o.









# Hydrologické celky podľa vodohospodárskej mapy pre k.ú. Veľká Lomnica



1 : 150 000

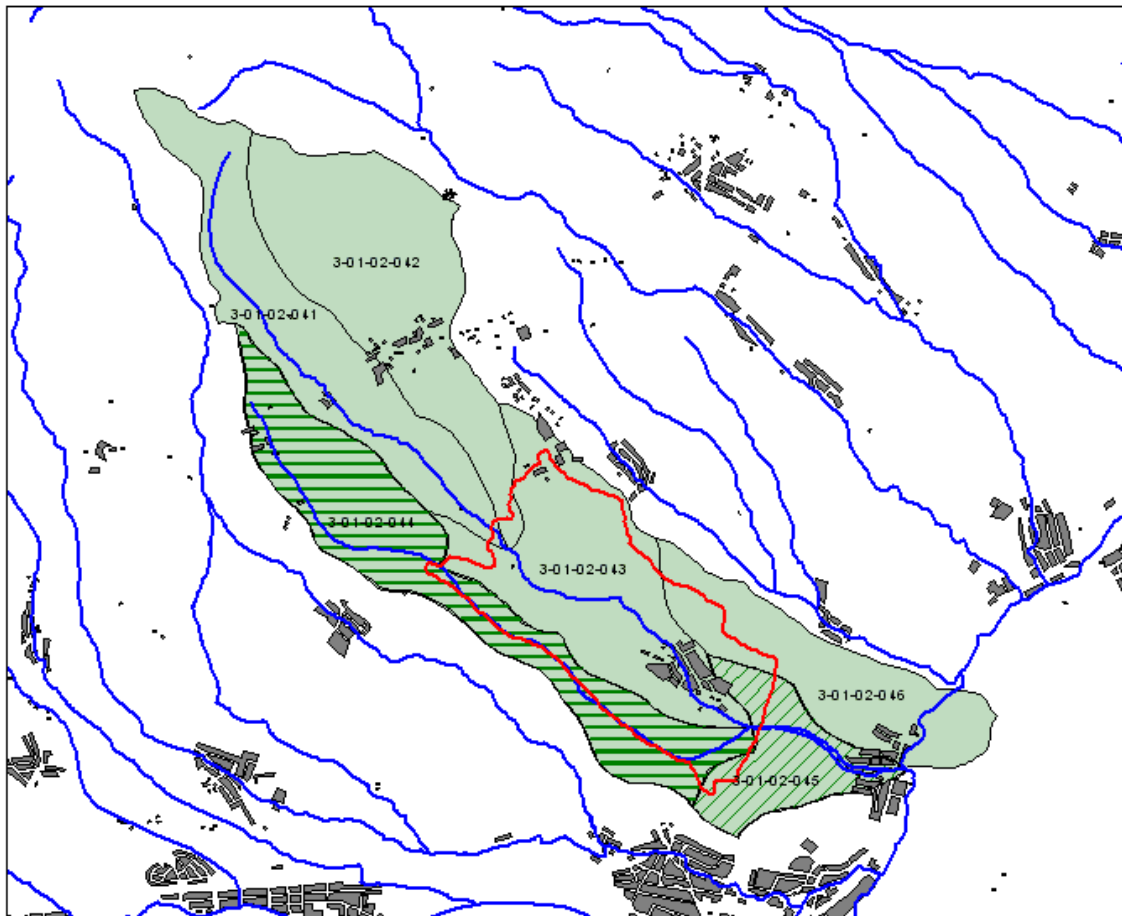


## Legenda:

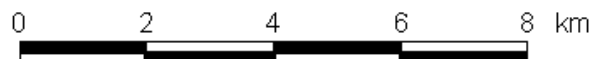
-  hranica KÚ Veľká Lomnica
-  vodné toky
-  sídla
-  hydrologický celok kú Veľká Lomnica
-  mikropovodie prebraté z hydrologického celku KÚ Mlynica
-  mikropovodie prebraté z hydrologického celku KÚ Matejovce
-  mikropovodie prebraté z hydrologického celku KÚ Veľká
-  mikropovodie prebraté z hydrologického celku KÚ Stará Lesná









# Hydrologické celky podľa vodohospodárskej mapy pre k.ú. Veľký Slavkov



1 : 100 000



## Legenda:

-  hranica KÚ Veľký Slavkov
-  vodné toky
-  sídla
-  hydrologický celok KÚ Veľký Slavkov
-  mikropovodia prebraté z hydrologického celku KÚ Gerlachov
-  mikropovodia prebraté z hydrologického celku KÚ Veľká

